

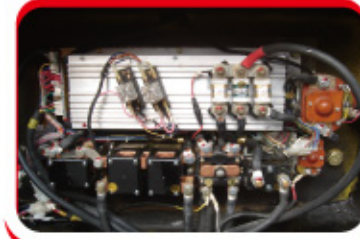
Control (*DC*) 

Separately Excited Motor (SEM) is a new type of DC motor where the field motor coil and armature receive power independently. This greatly improves motor performance providing increased acceleration and top speeds and reduced brush wear. One of the key benefits of Separately Excited Motor (SEM) is that it enables a significant amount of vehicular kinetic energy which is normally wasted during mechanical braking to be fed back to the battery, hence enhancing battery life. This regenerative braking is activated whenever accelerator pedal is released, The programmable controller represents the next level in drive system and is designed to provide smooth, silent, efficient and cost effective speed control. Output voltage at armature and current in field winding of the motor are controlled by varying switching frequency of MOSFETS. An infinitely variable speed can be obtained by throttle potentiometer.



MOSFET Electric Controller (*DC*)

We applied advanced GE U.S. MOSFET electronic controller on our CPD series electric forklift truck, It has very small voltage loss and higher efficiency; which consider stepless stable movement, speed and safe. Economical operation due to high working performance.



Italian SME AC Separately Excited Motors (SEM) Controller (*AC*)

The management of aptitude power, in any conditions of operation, guarantee the best electric supply status, keep the performance of forklift and accumulator balanced. this controller still provide 3 mode of power management:
 1) Economic mode qualified the performance of accumulator control the limited performance of forklift
 2) Standard mode balanced the performance of accumulator and forklift
 3) Qualified mode qualified the performance of forklift control the limited performance of accumulator



Less Noise

CPD/CPD-J series is adopted a new type of integrated steering unit with the load sensing, eliminate the steering motor and steering pump, achieved hydraulic system driven by only single pump. This series is adopted the excellent performance DC motor and the low noise pump, it is remarkably decrease noise of the driving and lifting, and the truck is more green to environment.



PMP Gearbox

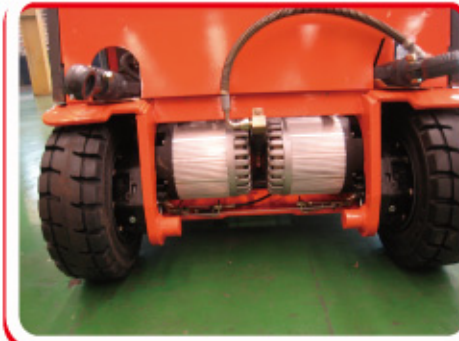
Professional quality, with long life design, robust and reliable.

Reliable Plugs and Switches

CPD10-30 series has been effectively considered the circumstances of users operation at the beginning of products design, and the important plugs and switches all have measures of protection, all the subassemblies have been past the check strictly, and the very important parts and subassemblies also have been past the fatigue and lasting experiments, ultimately every truck has been past the performance-examine strictly.

SME twin AC motor, Italy (*AC*)

The incorporation of SME developed components, including finely engineered helical gears, assures low noise, high quality and a longer service life. the front driving tyres with double motor which are two high performance, low noise, 3-way AC motors. Driving system is with strong traction and driving edit function. flexible driving, available to stop on the ramp when full load. The advantages is with strong traction and acceleration from zero to Max. speed with the control of aptitude moment and speed. It with high speed when straight going and transfer to lower speed automatic when turning.



Standard Equipment

- MOSFET controller
- Standard fork
- Standard seat
- Cargo protecting shelf
- Backup light
- Backup buzzer
- Backup mirror
- Lighting switches
- Lighting shield
- Electronic horn
- Double piece multiple-way valve
- Direction switches
- Backup light set
- Durable tire with pattern
- Hour meter
- Idle shift indicator
- High visibility mast
- Guy cable parking brake
- Lift-leaning joy stick
- Lifting speed limiting valve
- Towing pin
- Front spotlight
- Lean and adjustable steering wheel
- Tilt oilway lockvalve
- Hydraulic turning
- Top ventilation device
- Joy stick
- Hand brake
- Water temperature meter
- Tool kits
- Top-front light
- Rubber footplate mat
- Accumulator pile
- LCD cluster gauge
- Hydraulic oil-return filtration core
- Hydraulic oil-collection filtration core
- Hydraulic oil-collection staff guage
- Key switch
- Detent
- Turning light
- Emergency disconnect switch
- Rubber floor mat
- Locked spring gas
- Adjustable steering controlled
- Toolbox and file folder

Optional Attachments

- Wide view 2-stage full free masts
- Wide view 3-stage full free masts
- Wide carriage
- Long forks
- Fork extension sleeves
- Side shift
- Hinged forks, bucket
- Load grad
- Paper roll clamp
- Carton clamp
- Rotating forks
- Multiple drum clamp
- Sleeve-in drum gripper
- Load stabilizer (with side shift)
- Load push pull
- Baked block clamp
- Crane arm
- Ram



Optional Equipment and Accessories

- Front dual wheels and fender extension
- Solid tires
- All weather steel cabin
- Heater for steel cabin
- Color tire (white, green)
- Power brake
- Smoke reduction/spark arrester muffler
- Fire extinguisher
- Rear working light
- Custom colorpaint
- Auxiliary piping
- Auxiliary hydraulic valve modules
- Non-slip differential
- Overhead exhaust
- Headguard canvas
- 3-Fulcrums



Fork Standard

| Standard Equipment L x W x T mm | Width W mm | Thickness T mm | Length L mm | | | | | | | | | Suitable Forklift |
|---------------------------------------|------------------|----------------------|-------------------|------|-------|------|------|------|------|------|------|----------------------|
| | | | 770 | *920 | 1070 | 1220 | 1370 | 1520 | 1670 | 1820 | 1970 | |
| 920x100x35 | 100 | 35 | 770 | *920 | 1070 | 1220 | 1370 | 1520 | 1670 | 1820 | 1970 | 1.0~1.5T |
| 1070x125x40 | 125 | 40 | 770 | 920 | *1070 | 1220 | 1370 | 1520 | 1670 | 1820 | 1970 | 2.0T |
| 1150x125x45 | 125 | 45 | 770 | 920 | *1070 | 1220 | 1370 | 1520 | 1670 | 1820 | 1970 | 2.5~3.0T |

Specifications and design are subject to change without prior notice. Machines shown may include optional equipment.



CPD/CPD-J Series

Electric Forklift

ISO9001
CE



- Rated capacity: 1.0T/1.5T/2.0T/2.5T/3.0T
- Scientific ergonomic application
- High-capacity battery
- Twin DC motor with MOSFET electric controller or twin AC motor with SEM controller

DC or AC

SINOLIFT MATERIAL HANDLING EQUIPMENT CORP.

ADD: 618 Xile Road, Nanhui, Shanghai, China 201300
 TEL: +86 21 68014500 /+86 21 58003681
 FAX: +86 21 68014262 /+86 21 68038190
 EMAIL: info@sinolift.com
 WEB: www.sinolift.com



